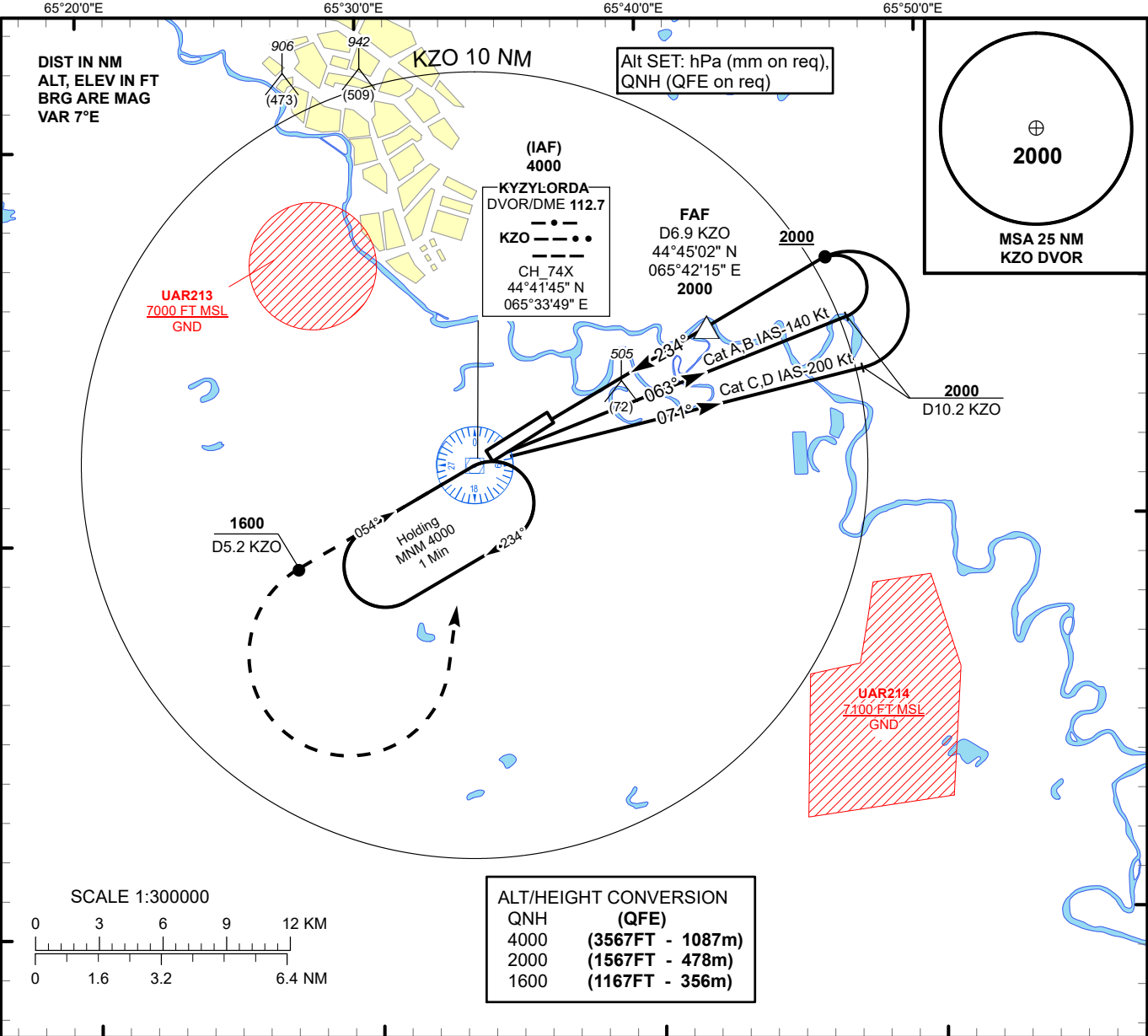


INSTRUMENT
APPROACH
CHART - ICAO

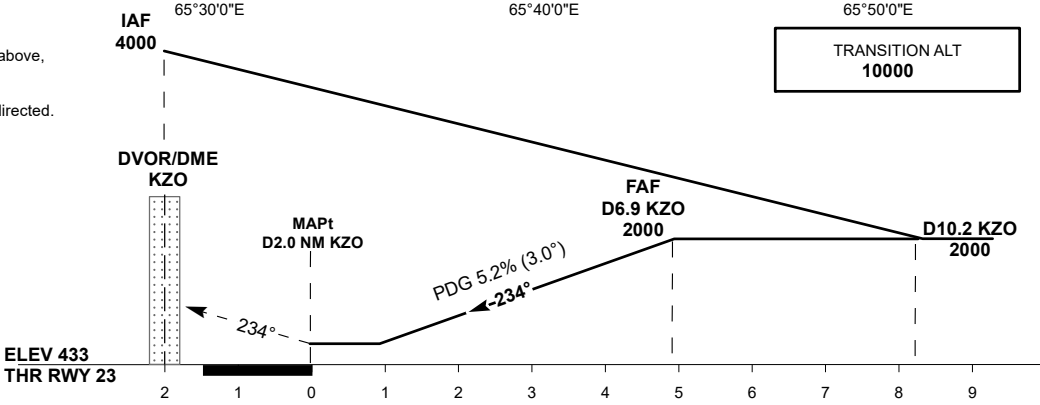
AERODROME ELEV **433 FT**
HEIGHTS RELATED TO
AD ELEV

KYZYLORDA TOWER 120.9
KYZYLORDA ATIS (EN) 134.9
KYZYLORDA ATIS (RU) 122.9

KYZYLORDA
VOR/DME Z
RWY 23



MISSED APPROACH
Climb on track 234° to 1600 or above, outbound to D5.2 NM KZO.
Turn LEFT to KZO.
Climb initially to 2000, then as directed.
RADIO FAILURE: in case of RCF climb to 4000 to KZO and join holding pattern. Missed approach turn speed limited to 240 Kt IAS maximum.



Aircraft Category		A	B	C	D	DIST to THR	NM	1.0	2.0	3.0	4.0	4.8	
Straight-in Approach OCA/H						DME KZO	NM	3.0	4.0	5.0	6.0	6.9	
	VOR/DME	770(330)		770(330)		ALTITUDE	FT	800	1119	1437	1756	2000	
						HEIGHT	FT	(367)	(686)	(1004)	(1323)	(1567)	
Aerodrome Operating Minima MDH ft x RVR(CMV)	VOR/DME												
						GS	Kt	80	100	120	140	160	180
						FAF-MAPt (4.8)	min:sec	3:36	2:53	2:24	2:03	1:48	1:36
						Desc.Rate(5.2%)	ft/min	420	530	630	740	840	950

KYZYLORDA
VOR/DME Z

AERONAUTICAL DATA TABULATION

VOR approach to RWY23 from KZO DVOR/DME	
Fix/point	Coordinates
KZO DVOR/DME (IAF)	44° 41' 44.9"N 065° 33' 49.3"E
(FAF) D6.9 KZO	44° 45' 02.1"N 065° 42' 15.4"E
THR RWY 23	44° 42' 43.85"N 065° 36' 20.40"E
Final approach descent angle is 3°	